

Co-sponsored by:



Funding Support



Technical Assistance



### Information

Contact:

Village of Platte Center

Nicolette Coble, Village Clerk

402-246-2135

# Village of Platte Center Source Water Protection Project

APRIL 2024

**W**orking to better understand the source of drinking water for the community is the primary goal for the Village of Platte Center (Village) Source Water Protection Project. Four primary efforts are underway including:

- 1) Development of a groundwater flow model,
- 2) Analyzing the local aquifer,
- 3) Development of a Wellhead Protection (WHP) plan, and;
- 4) Locating and decommissioning abandoned wells.

### UPDATED WELLHEAD PROTECTION AREA

- Hydrogeologic data will be utilized to create the Upper Shell Creek Groundwater Model to delineate a new WHP area.

### AQUIFER ASSESSMENT

- To obtain a better understanding about potential threats to the water system from nitrate contamination.

### WELLHEAD PROTECTION PLAN

- An inventory of potential contaminants, long-term water supply planning, public outreach and education.

### WELL DECOMMISSIONING

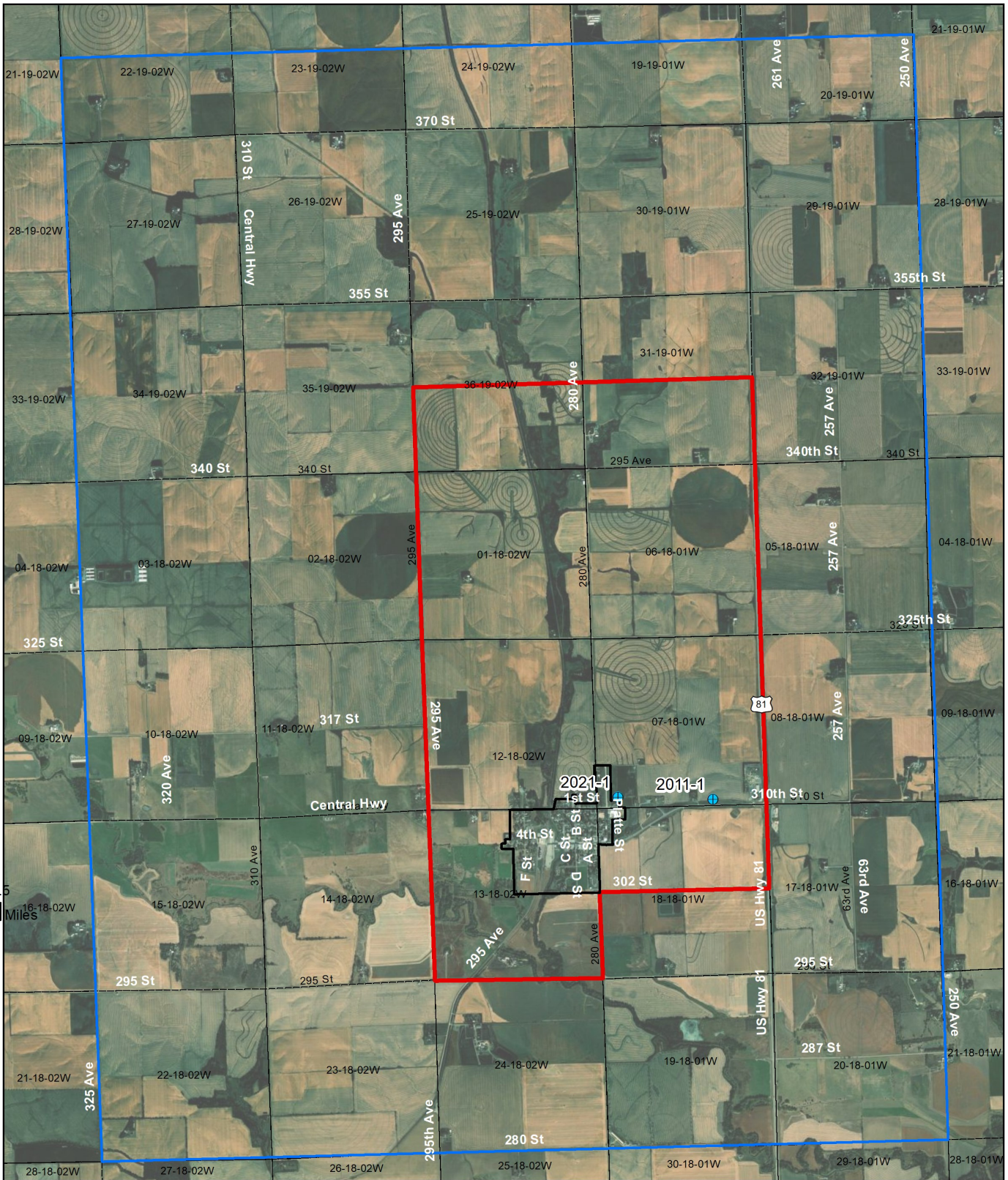
- Have an abandoned well? Funding is now available to decommission wells at no cost to the property owner within the Project Area (back page).

### SCHEDULE

The project started in March of 2024 and will be complete by March 2025.

The Nebraska Department of Environment and Energy has provided the Village funding. Lower Platte North NRD is also supporting the project with cash match, staff time, water sampling, and will support well decommissioning.





1.5  
Miles

- ⊕ PWS Wells
- City Boundary
- Project Area
- WHP Area
- Sections

## PLATTE CENTER SOURCE WATER PROTECTION PROJECT

DATE: 4/22/2024

PROJECT AREA

